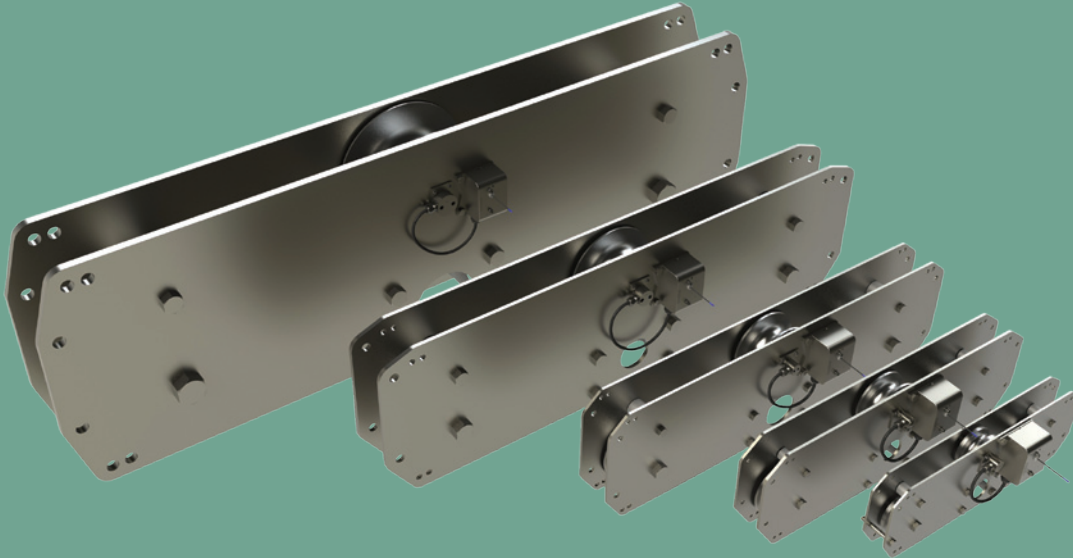


STAINLESS STEEL WIRELESS TENSIO METER

(ROPE SPEED/PAYOUT/DIRECTION OPTION)



AN EFFECTIVE LOAD MONITORING SOLUTION WHEN A DEAD END FOR A LOAD CELL ISN'T AVAILABLE

LSI Tensiometers are built as standard from 304 stainless steel and provide users with flexible options including rope speed/payout/direction.

Tensiometers are a valuable load monitoring option for applications where there is not a dead end to place a load cell. They are also ideal for a single part of line where the hook will enter the water and a load cell is not an option, or the application calls for rope payout/direction and line speed.

LSI Tensiometers offer a key design factor that competitive systems do not offer. We utilize a radio transmitter to send the load value wirelessly to the system display, which eliminates cables and amplifiers. It also simplifies installation and long term support.

Each LSI Tensiometer is built from 304 stainless steel, as the majority of applications are in

marine based environments. This provides users with an off-the-shelf solution that will withstand harsh salt elements. The load pin is made from 17-4 stainless steel.

Another benefit of LSI Tensiometers comes from the completely sealed bearings. They do considerably better in marine environments than the rapidly-corroding stainless sealed bearings of our competitors.

We ship each tensiometer transmitter as standard with a "D" cell lithium battery. This is a military grade battery and will withstand temperature variances ranging from the Arctic Circle to the deserts of Dubai.

Each radio transmitter is equipped with a voltage switcher, allowing a "D" cell alkaline battery to be installed into the transmitter.

This feature is convenient if you cannot easily source a lithium

battery once the 3 week low battery warning activates through the system display.

We take extra steps to pot our electronic circuit board in a gel that dramatically reduces issues caused by moisture.

Users can request an option for rope payout, rope speed and rope direction. Rope direction indication on the display will show positive and negative values.

LSI tensiometers are compatible with our GS550 and GS820 Displays.

The GS820 and GS550 Displays provide a standard built in data logger with the ability to record 32,000 events, and can be easily downloaded to a USB drive.

