

GS820-CSA

GS820-CSA class 1 division 2 Specifications

Features:

- All stainless steel enclosure AISI-304
- Weather resistant
- Transflective 320 x 240 graphical display with white led backlight. The LCD is FSTN technology with 6” viewing area.
- 32,000 events datalogger
- USB port for datalogger download or firmware / load charts update
- Four internal mosfet solid-state relays, 1 amp each
- Units: metric and U.S. (kg, lbs, metric tons, long tons, short tons)
- Compatible with standard two-way LSI GS radio network
- CSA Class 1 division 2 certified



Applications:

- Lattice crane rated capacity indicator
- Hydraulic crane rated capacity indicator
- Tens of thousands of load charts could be programmed in the display.
- Screen layout adjusts itself based on the sensors list
- Wind speed & wind gust monitoring

General Description:

The GS820 system includes the cabin mounted GS820 radio display and compatible crane mounted sensors. The GS820 creates a two-way radio network with the sensors to bring required lift data to the operator. Hoist load, boom and jib angles, boom length, wind speed and pending two block can be detected and then indicated to the operator in real time. Working load radius can be calculated and compared to a rated capacity chart (if programmed). Furthermore the GS820 can be programmed to generate warnings, alarms and lockout commands, all triggered by adjustable thresholds and limits. All these events can be recorded by the data logger with a time and date stamp. The exact operational function of the GS820 system depends on the sensor configuration used and the rated capacity charts programmed (where applicable). The GS820 includes a USB port to facilitate software and chart updates and data logger downloads using a USB mass storage device (USB key).

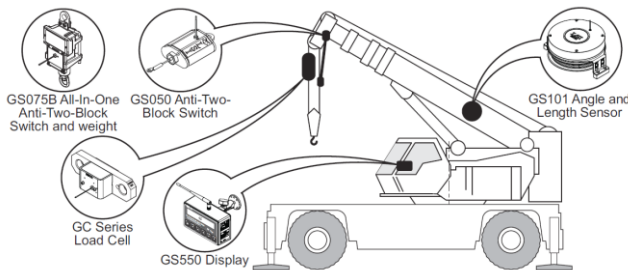


Figure: application example

GS820-CSA

Table of contents

Features: 1

Applications:..... 1

General Description:..... 1

Table of contents 2

Ordering information 2

Specifications 3

Applications details 4

Dimensions and installation 5

Ordering information

Model	Description
GS820-CSA	Display certified CSA Class 1 division 2
LB006	Display cable for power and lockout wires, 6 feet long.
GM820	User manual
GM820U	Quick reference guide
TA008	Field replaceable antenna

GS820-CSA

Specifications

Parameter	Test Condition	Min	Typ	Max	Unit
Input voltage		10	12/24	30	V
Current requirements*		0.15	0.3	0.5	A

* If lockout wires are used, the current consumed on those wires must be added.

Output lockouts

White wire				1.0	A
Green wire				1.0	A
Orange wire				1.0	A
Blue wire				1.0	A

Other parameters

Radio transmission power	Transmitting		0.025		Watts
			13		dBm
Display weight			6.5		Lbs
			3.0		kg

Absolute maximum ratings

Parameter	Test Condition	Min	Typ	Max	Unit
Input voltage		10		36	V
Temperature range	Operating	-20		+60	°C
Temperature range	Storage	-40		+70	°C

Certifications

FCC: parts 15.247, 15.205, 15.207

Industry Canada: RSS-210

Class 1 division 2

CSA C22.2 No.0.4.M2004, No.0-M1991, No.142,M1987, No0.157-M1992, No.213-M1987

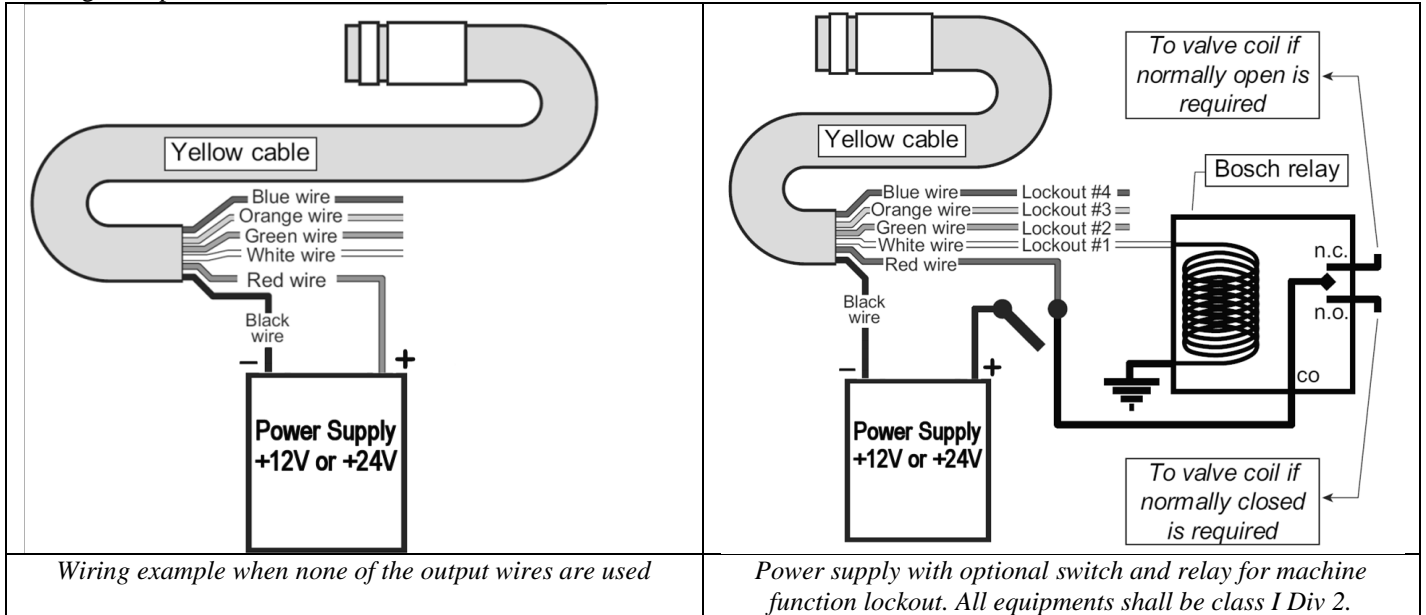
UL508, UL913, UL1604

ANSI/ISA-12.12.01-2007

GS820-CSA

Applications details

Wiring examples

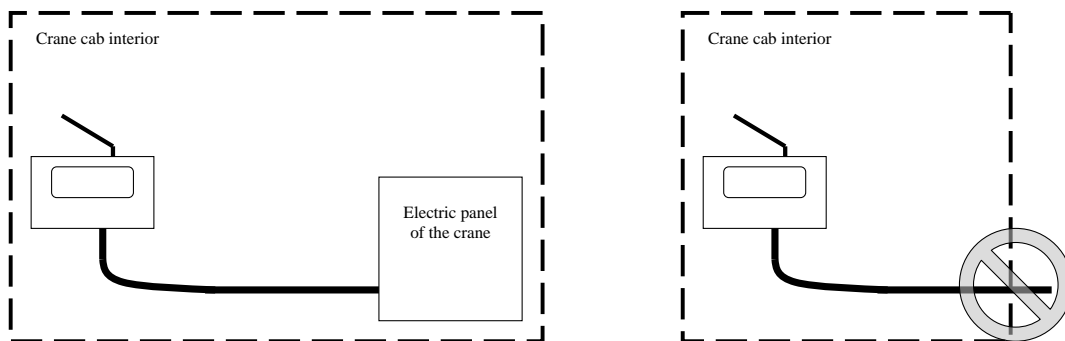


Lockout control is programmed in the 'lockout' menu. The GS820 can be programmed to generate alarms and lockouts for almost all programmed limits and two-block. Furthermore, warnings are generated when approaching programmed load limits and rated capacity (when applicable). By default the lockout wires carry crane power supply voltage as long as the display is in safe condition. Polarity of the output could be inverted in the lockout control menu.

Partial list of possible lockout conditions:

Minimum & maximum angle, radius, tip height, boom length, Overload, Two-block, slew left & right limits, warning signals to slow down switch movement, Maximum wind speed & wind gust, etc...

Installation

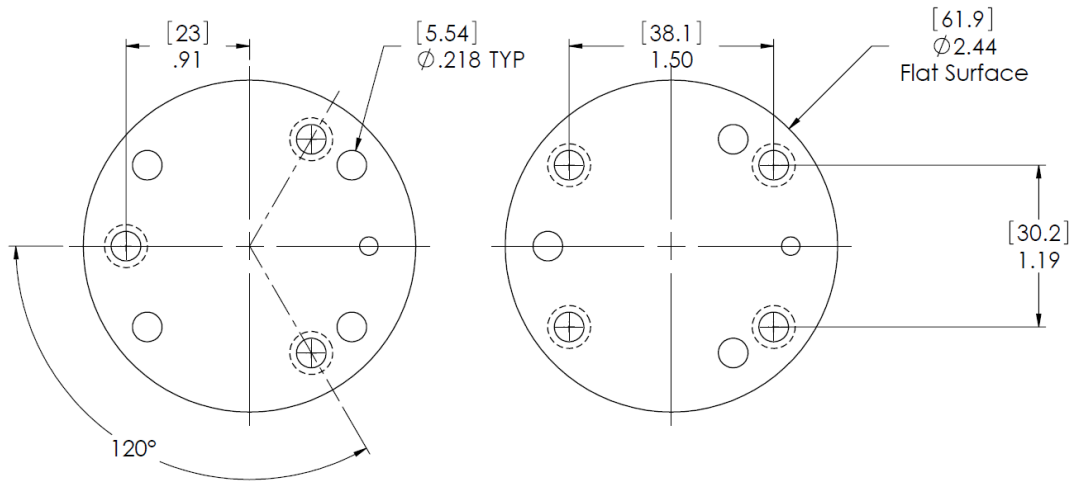
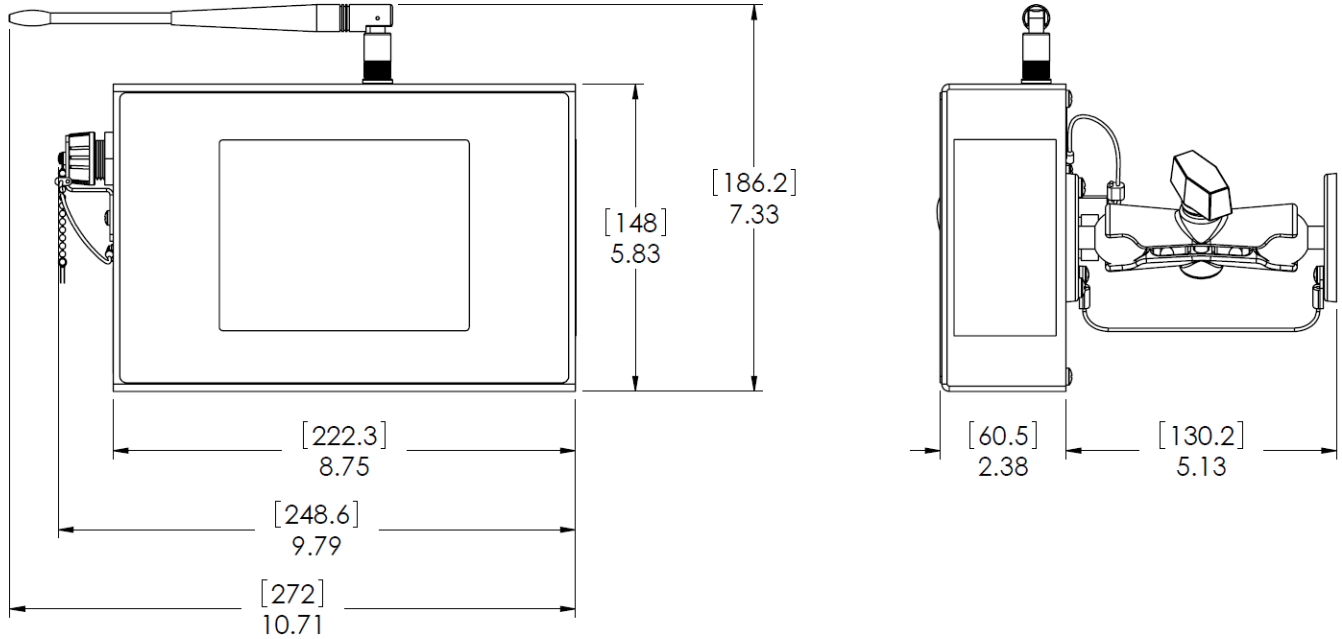


Warning: Cables for this product must be connected inside a protected area (ex: crane cab). Cable must be routed to protect wiring from being damaged during normal use.

GS820-CSA

Dimensions

The mounting bracket requires a flat surface of at least 2.5 inches in diameter on both sides and where the back of the surface is accessible in order to tighten the nuts. Drill ¼ inch boltholes through the mounting surface with a ¼ inch bit following either three or four holes configuration. Use #10 or M5 screws.



Mounting bracket hole pattern (not to scale)

Units are in inches [millimeters]